



PAF

EXPRESS

Family History & Genealogy

Washington County "Personal Ancestral File™" Users Group Newsletter

February 2009 Editor – Denece C. Larsen (435) 634-0204 caboose@skyviewmail.com Vol. 17 – Sample

COMPLIMENTARY COPY

If you would like to receive the 8 page newsletter every month – Join the WC-PAF Users Group

HISTORY OF THE WASHINGTON COUNTY PAF USER'S GROUP WC-PAF UG

The first organizational meeting of the WC-PAF Users Group was November 1991. It is remembered that about 50 people were in attendance in the library in Hurricane, Utah. Howard Thompson had tried previously to get a PAF genealogy group going and was instrumental for calling this group together. Some of those at the first meeting and other early meetings are still members.

Ray Cluff was the first President with Howard Thompson as Vice President. Bev Stutz and Curt Larsen were on the original Board with others. Howard Thompson served as President following Ray Cluff. A few years later, Howard's son Doyle was elected Vice President at the first meeting he attended. The following year he was President. Curt and Denece Larsen were at the first organizational meeting and Curt has served the group in some capacity on the Board ever since. Also Elaine Schnabel and Barbara Sherratt were at the first meeting and are still members. Connie Stewart is now President and can be contacted for further information – 435 628-7932.

The meetings for some time alternated between the old white chapel in LaVerkin and the chapel on 700 South in St. George. Later Helen Bingham a Board Member made arrangements to meet in the Morningside Stake Center on River Road in St. George and is where the meetings are still currently held.

The newsletter was started sometime during 1992. Terri Weidman was the first editor for a short time followed by J.D. Elders. After about 2 years Denece Larsen took his place and is still the editor at the present time.

We have had many capable outstanding instructors over the years: Shanna Jones, Bob and Elaine Booth, Bruce Buzbee, Robert Paxton, Bob and Joel Kroff, Paul Larsen,

Garth Gooch and Sue Bues to mention just a few of our presenter/teachers. Some of the classes that have been presented in the past year are: "Crash Course in Family History," "Research Cycle: Technique and Tips," "We Are the Clean Up and Get It Right Generation," and "Power Point/slide show with music." This year our meetings have also featured "Techno Minutes" with subjects such as: "Flash Drives," "FamilySearch.org," "New Internet Sites at Regional Family History Training Center," and "RootsTV."

The WC-PAF Users Group is a non-profit service organization with the purpose of furthering Family History work. Our emphasis is to help members to use the Personal Computer using software to organize, document, and advance their family history work; to include assistance, and training with the following:

- Practical knowledge of computers
- Genealogy software features, and resources that are useful in family history work
- Use of the internet
- Family history research tools and methods
- Community service relating to family history.

The WC-PAF Users Group meetings are held the 3rd Saturday of the month – 10.00 a.m. – 12:00 p.m. at the Morningside Stake Center — 881 River Road, St. George UT. No meeting is held in August. ☺

**GENEALOGY GAME
THE ONE THAT
DIES WITH THE
MOST
ANCESTORS –
WINS !**

WHAT'S INSIDE?

Page 1	History of the WC PAF Users Group
Page 2	Welcome to Surfer Grandma – Passwords
Page 2	PAF Tips & Tricks – Files Used in PAF
Page 2	Ron's Corner – Snippets of Knowledge
Page 2	General Information

WELCOME TO "QUESTION SURFER GRANDMA!"

It's Surfer Grandma!



Do you have a question about Computers, Family History or Genealogy?

Send it to **Surfer Grandma!**
jflightner@skyviewmail.com

It will be forwarded to an expert! Surfer Grandma needs your questions! If we don't keep her busy she might go to work for someone else!

If that happens – she will be greatly missed!

Q. What are good guidelines to follow to create Passwords?

A. Think of your computer passwords as if they were keys to your home and everything you own. Given their importance, it just makes sense to create strong ones. Here's what to do:

Make it Lengthy. Each character added to your password increases the protection. It should be at least 8 characters; 14 characters or longer is ideal.

Combine Letters, Numbers, and Symbols. The greater variety of characters that you have in your password, the harder it is to guess.

Use a Sentence as the Starting Point. Think of a memorable sentence, take the first letter of each word, then mix up lower case and upper case, and replace some letters with numbers and symbols.

Avoid Sequences or Repeated Characters. Passwords such as "12345678" or "222222" do not make secure passwords.

Have Different Passwords for Different Places. Create strong passwords for any online transaction where your credit is at stake, and a "lightweight" password for online resources like magazines and newspapers. –*Surfer Grandma*

(Answer came from South Central Communications newsletter. Used with Permission)

PAF TIPS & TRICKS

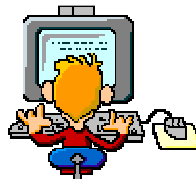
By – Elaine Booth – WC-PAF UG Instructor

Files Used in PAF

- **PAF File:** When you type information into Personal Ancestral File, it is saved into a file that ends with .paf, such as Wonderly.paf.
- **Backup:** When you make a backup of your information, it is saved in a Windows zip file that ends with .zip.
- **GEDCOM:** When you export information, it is saved as a GEDCOM file. GEDCOM files end with .ged.
- **Listing:** When you import a GEDCOM file, unrecognized information, error messages, and import statistics are put into a listing file. Listing files take the name of the GEDCOM file and add .lst to the end.
- **Reports:** If you save a report to file, it is saved in Rich Text Format. These files end with .rtf.
- **Multimedia:** PAF accepts several picture, sound, and video files:
 - Web pictures: .jpg, .jff, .jtf, .png.
 - Windows pictures: .bmp, .eps, .pcx, .dcm, .pcd, .fpx, .tif, .wmf, .emf, .dic, .psd, .tga, .ras, .cmp, .pct, .mac, .img, .msp.
 - Sound: .wav, .mid, .rmi.

- Video: .avi, .mpg, .mov

You can tell PAF what drives and folders to always save files into by selecting Tools, then Preferences, and then the Folders tab.ese files are created and used by Personal Ancestral File.



Ron's Corner
Snippets of Knowledge

By- Ron Bremer
WC-PAF Board Member

A wonderful reference for most of the states is called State Blue Books. These have been published for years and include information about state and county agencies and officers. And they often contain important history and record location data.

Sample titles are: Michigan Manual, Idaho Blue Book, New Hampshire Almanac, Rhode Island Government Owner's Manual, and Report of the Secretary of the Commonwealth.

Please remember to document all the information that you find on the Internet. This is so very important because it is so easy to make a mistake. There is a high degree of errors on the Internet. Sorry about that but it is true. The best way to check information for accuracy is to search the original record or document. If you do not check out your information, you just may be perpetuating incorrect or false information.

WC- PAF MEETING SCHEDULE

The next meeting will be:

21 March 2009 — (No meetings in August)

The WC-PAF Users Group meetings are held the 3rd Saturday of the month – 10.00 a.m. – 12:00 p.m. at the Morningside Stake Center — 881 River Road, St. George UT

WC-PAF USERS GROUP MEMBERSHIP DUES FOR 2009

Annual dues are \$12.00 per household for e-mailed copy of the newsletter and handouts at the meeting. For those who want a hard copy of the Newsletter, the dues are \$17 (\$12.00 plus \$5.00 to defray printing and mailing costs when you are not at the monthly meeting to pick up your copy.

New members joining after March 31st – dues will be prorated at \$3.00 for e-mailed copy of the newsletter and handouts at the meeting or \$4.25 per quarter for a hard copy.

Mail your check payable to WC-PAF Users Group
473 So River Road #1-196 – St George UT 84790

WC-PAF USERS GROUP
2009 OFFICERS & BOARD MEMBERS

<u>President:</u>	Connie Stewart	628-7932
<u>Vice-President:</u>	Robert Kroff	656-1286
<u>Secretary:</u>	June Morton	652-9463
<u>Treasurer:</u>	Ron Coleman	656-4485
<u>Publicity</u>	Marilyn Rohrer	688-2138
<u>Media</u>	Fran Lightner	688-1260
<u>Set-Up</u>	Curt Rohrer	688-2138
<u>Board Members At Large:</u>		
Ron Bremer	Pat Foster	628-6005
Helen Lenz	635-0519	Dwight Seamons 656-2091
Max Turpin	674-9204	

