

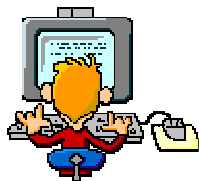


# PAF EXPRESS

## Family History & Genealogy

Washington County "Personal Ancestral File™" Users Group Newsletter

December 2009 Editor-Denece C. Larsen (435) 634-0204 [caboose@skyviewmail.com](mailto:caboose@skyviewmail.com) Vol. 17 #12



### Al's Alley Secure Pieces of Knowledge

By- Al Forsythe  
WC-PAF Member & Presenter

#### THE INTENT AND PURPOSE OF NEW FAMILYSEARCH

nFS may contain multiple records for each individual in the database. It's important to remember that the records in nFS come from various sources: Membership, Temple, Ancestral File, Pedigree Resource File, Extraction, and more.

Hugh Nibley said that there is no written document of any length that does not contain errors.

This is true of the genealogical data found in nFS. Much of the data is repetitive and some of the data contains errors.

In order to correct erroneous data, nFS allows patrons to collaborate to correct data errors. However, not all data problems can be fixed or corrected. Members may only change/delete data that they themselves have contributed. Other inaccuracies can only be disputed. Most inaccurate data cannot be deleted from the nFS database.

Frequently, records must be combined to show correct names, dates, and places, as well as completed temple ordinance data. However, combining records does not delete data from the nFS database.

When examining data problems in nFS, it is important to remember the purposes of nFS, which are:

1. Eliminate duplicate temple ordinances

2. Facilitate and make more user friendly the temple name submission process
3. Encourage collaboration
4. Stimulate interest in genealogical activity.

It is also important to understand that nFS cannot be everything to everybody. In many cases it will not be possible to configure nFS to display genealogical data exactly as we would like it displayed. Some problems we will just have to live with.

When nFS was first introduced, the question was frequently asked, "Is PAF going away?" The answer is a robust "No!" PAF and other genealogical applications such as Roots Magic, Legacy, Ancestral Quest, etc. should be used to maintain our personal "complete" and "accurate" genealogical database. nFs is an adjunct to this personal database.

We will eliminate a lot of frustration if we remember that nFS, as currently configured, is a primarily a research tool and also provides the means for submitting ordinances to the temple. It is not a personal online genealogical repository.

Merry Christmas all!

~~FIB~~ - December 25<sup>th</sup>

Take the day off!

Give someone who is actually alive a little attention today.

The Genealogy Daily - [www.GenealogyDaily.com](http://www.GenealogyDaily.com)

#### WHAT'S INSIDE?

Page 1	Al's Alley - The Intent and Purpose of New FamilySearch
Page 2	A Genealogist's Christmas Eve
Page 2	Carry a Scanner in Your Pocket
Page 3	Fact or Fiction? Top Genealogy Myths
Page 5	15 Fabulous Gifts for Genealogists
Page 7	Dear Santa - For Christmas I Want!
Page 8	General Information 